

by John Parkinson


# MARY LINDA USES NEGATIVE SPACE IN A POSITIVE WAY

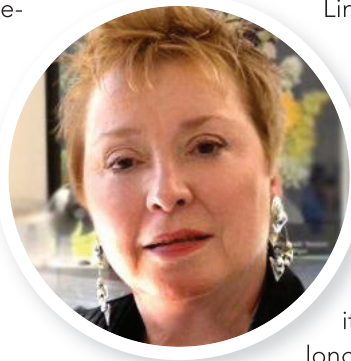
*A simple yet elegant design with* **MARY LINDA HORN**

**Mary Linda Horn, AAF, PFCI, OCF, AIFD**, currently works as a freelance designer and consultant and has almost 35 years of design experience. In this arrangement, the intent was to create a clean, simple design that could be done with a minimum amount of material and labor, but with a good deal of impact. The design is quite sellable, even just from the limited stem count. With the exception of the bear grass there is only one stem of each of the other varieties used and it can be adjusted for any season or color combination.

It is a design that can also be reproduced for large quantities—think Administrative Professional’s

Day, bridal showers, etc. This type of design does not take up much room in the cooler, office desk, hospital room, or delivery van, adds Mary

Linda. “This would be very easy for a walk-in customer to take home. It’s such an easy design to carry in your store and one that will last for a long time!” With this design the visual appeal is keeping the color palette very simple and not letting the accessories overwhelm. Even though the heavy flower is at the top it is visually and physically balanced as long as the foliage is removed from the sunflowers and the Viking Poms are clustered tightly at the base. 



*Designer*  
**MARY LINDA HORN**

*Experience:*  
**35 YEARS**

*Awards*  
**DESIGNER OF THE YEAR MULTIPLE TIMES AND CHUCK BANNOW FROM MFA**



## DESIGN CONSIDERATIONS

- 1 If a container is porous, use a liner or plastic foil inside to hold foam and water. Pan glue foam into liner and then allow to soak in water.
- 2 Create a reservoir so water can be added. This allows for less foam surface to be covered.
- 3 Pan melt the saucer to the container. Insert each of the stems nearly to the bottom. This creates stability and will keep the stems in close contact with wet foam.
- 4 Gather together the bear grass and wrap with wire or tape at the base to create one insertion. Trim off the excess at base and trim the upper tips if necessary.





## ARRANGEMENT NECESSITIES

- \* FRESH Sunflower, solidaster, Viking Pompon, bear grass, moss
- \* HARD GOODS 1/3 block foam, 4" terra cot pot, butterfly pick, and 24 gauge wire or Cowee wired wood pick